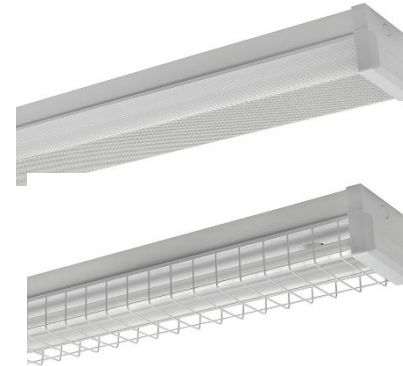


Sabre LED Tube Battens

Installation & Maintenance Instruction Leaflet



Victoria (Head Office & Manufacturing)
 Website: www.clevertronics.com.au
 Email: info@clevertronics.com.au
 Phone: +61 3 9559 2700
 Fax: +61 3 9559 2799

New South Wales
 Phone: +61 2 8805 6400
 Fax: +61 2 8805 6444

Queensland
 Phone: +61 7 3442 9700
 Fax: +61 7 3442 9777

South Australia/Northern Territory
 Phone: +61 8 8301 8800
 Fax: +61 8 8351 8286

Western Australia
 Phone: +61 8 9207 0000
 Fax: +61 8 9207 0088

New Zealand
 Phone: +64 800 548 448

Designed in Australia to comply with the requirements of AS/NZS CISPR15: 2017

Models:

FBSxxx-LT-yy-zz-ss-tt

Lamps:

xxx = 1L2	1 x 600mm 840 LED Tube
xxx = 2L2	2 x 600mm 840 LED Tube
xxx = 1L4	1 x 1200mm 840 LED Tube
xxx = 2L4	2 x 1200mm 840 LED Tube

Options:

Microwave Sensor	zz=MS
Black Colour	ss=BLK
ZW Inline filter	tt=FLT

Spare Parts:

3170030	600mm 840 LED Tube
3170080	1200mm 840 LED Tube
3170082	Ozon LED TUBE

Important:

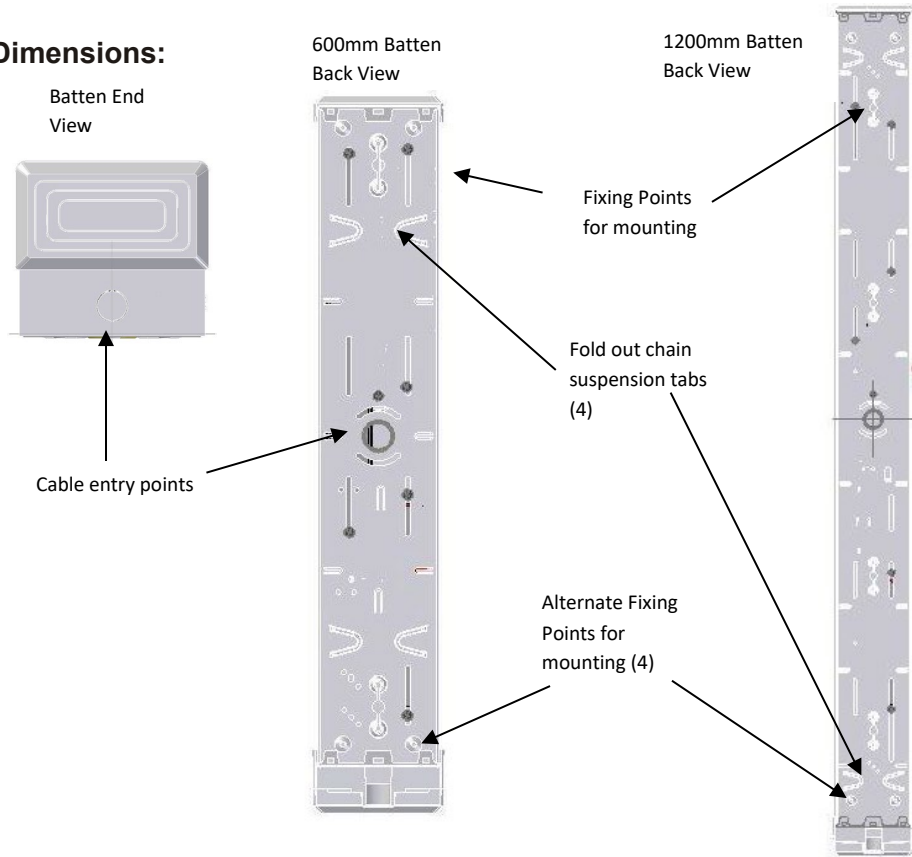
It is illegal for anyone, except for a licensed electrician to install or maintain this product. Before installation, ensure that the electricity supply has been switched off and isolated. Installation must be carried out in accordance with the relevant Australian and International Standards.

Installation:

This Sabre LED batten can be wall or ceiling mounted.

- Refer Images and Dimensions below for the mounting hole, cable access and other dimensions.
- Remove the wire guard or diffuser
- Remove the cover plate
- Position the batten in the desired location.
- Mark out the fixing points on the mounting surface.
- Install appropriate fixing hardware.
- Route power supply cables through the access hole as the rear of the fitting or the ends if using surface conduit (punch out the knock-outs in the plastic end caps)
- Fasten the batten to the surface.
- Terminate the supply cable to the terminals marked L, N and E (240V AC/50Hz)
- Re-attach the cover plate
- Re-install the diffuser or wire guard (if using a wire guard be sure to fix the wire guard into position using the screws provided that go through the side of the cover plate and over a section of the wire guard).

Dimensions:



Maintenance:

When replacing the LED tube, be sure to insert the power end of the tube into the power end of the fitting. The power end of the fitting is labelled with the image below.

Insert Power End of Tube here

Warning:

Not for use with any fluorescent lamps
Use only LED Tubes

NOTE:

These fittings are **NOT** compatible with fluorescent lamps

Warranty:

For Product Warranty information and Terms and Conditions of Sales please refer to our website <http://clevertronics.com.au/terms-conditions-sale-australia-nz/>